



From ancient times,
the Japanese have used water
to reset one's mind.

Refreshing the soul with sublimely
pristine water, indulging in the peaceful
relaxation of bathing, Japanese people
wash away their hesitations and regain
the strength to charge on.

It is a part of everyday life,
the time and ritual to feel reborn.

INAX transforms the bathroom
experience by creating beautiful,
innovative products
delivering Japan's rituals of water that
make everyday life easier, healthier, and
more enjoyable, enabling everyone to
live well.



THE RITUALS OF WATER TRANSFORM EVERYDAY LIFE

THE JAPANESE BEAUTY OF
LIGHT AND SHADOW



The Japanese have traditionally sought beauty by embracing natural light and its seasonal changes within the architecture. From the sunlight and the dim glow of

the moon emerge a myriad of different shades of darkness, creating spaces of unparalleled beauty through the interplay of light and shadows.



WITHIN THE
ARCHITECTURE

With eaves limiting the sunlight, the faint light that penetrates through creates alluring shadows in traditional Japanese architecture. Developing an appreciation of the special effect the use of light can bring about, the Japanese started to design spaces in totality by controlling the shades and shadows.

REFLECTION ON
CERAMICS

Crafted with the harmony of light and shadows in mind, Japanese ceramics bring out the allure of their surroundings. The gentle surface glow and changes in the shadows with the shift of light stimulate the imagination, bringing about a quiet sensation in the mind of the beholder.

FUSION
WITH WATER

Since ancient times, the Japanese have used water to purify themselves physically and spiritually. With sunshine twinkling on its surface and shadows swaying with its flow, the fusion of light and shadows with water stimulates people's souls with the natural effect of water.

JAPANESE SPATIAL AESTHETICS:
TRANSFORMING BATHROOMS
AROUND THE WORLD

How would adopting the concept of light and shadows change the bathroom? The Japanese brand INAX has taken on the challenge of creating such an evolutionary environment.

The "bathroom of light" refreshes one's mind as though the brightness washes away their troubles. The light falling on tiles and products forms a gradation of shadows with a rhythmical effect, filling the entire space with delicate illumination while emphasizing the brilliance of the sun.


Bathrooms are no longer spaces of limited importance where people spend minimum time. They are taking center stage, offering cleanliness and comfort, transforming everyday life.



TABLE OF CONTENTS

INAX AWARDS	09
INAX HISTORY	10
S600 LINE	16
S400 LINE	22
S200 LINE	26
TOUCHLESS TOILET	29
TECHNOLOGY	34
SATIS G	36
MANUAL BIDET	38
INAX TOILET	40
TECHNOLOGY	40
AQUA CERAMIC TECHNOLOGY	42
RIMLESS	45
CERAFINE™ VESSEL BASIN	46
INAX SHOWER	49
KITCHEN SOLUTION	52
ACCESSORIES	54
TECHNICAL DRAWINGS	56

INAX AWARDS




2020
CERAFINE™ VESSEL BASIN

2020
S600 LINE Interior Architecture

2020
S600 LINE Bathtub


2020
S600 LINE one-piece toilet



2020
INAX Exhibition at Milan 2019

2020
INAX Brand Design


2020
Exposed Shower System
S400 LINE



2016
SATIS G Shower Toilet

2016
SATIS S Shower Toilet

2020
INAX Signature Elements and Reference Design



2019
Aqua POWER Shower

2016
Preas LS toilet

2016
AQUA CERAMIC Technology

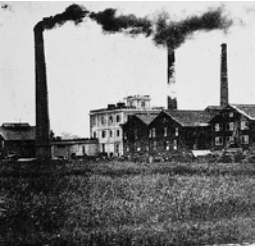
2016
YL-A401 Vessel Basin

2020
S400 LINE Manual Bidet

1910>



1918
Appointment of Hatsunojo and Chozaburo Ina as technical advisors to produce the tiles for the Imperial Hotel, designed by Frank Lloyd Wright.



1924
Establishment of Ina Seito Co., Ltd. (Managing Director: Chozaburo Ina) Production of ceramic tiles, pottery pipes and terracotta.



1945
Start of sanitaryware production.



1967
Launch of Japan's first shower toilet with warm water shower spray and dryer function – Sanitarina 61.



1976
Launch of INAX's first shower toilet seat – Sanitarina F1.

1980>



1985
Change of company name to INAX Corporation.



1990
Launch of world's first self-powered automatic faucet Automage.



1994
Launch of toilet with KILAMIC –antimicrobial technology which is highly resistant to scratches and stains.



1998
Launch of ECOCARAT functional interior ceramics that control humidity and odor. Winner of Good Design Long Life Award



1999
Launch of toilet with PROGUARD technology for maximum protection against hard water stains and spots.

2000>



2001
Launch of world's most compact tankless shower toilet SATIS. Winner of Good Design Gold Award.



2005
Launch of touchless faucet that supplies water by sensor technology.



2006
Development of the "push button" intelligent control shower system for prefabricated bath.



2007
Japan's antibacterial measurement standard certified to ISO standard.

2010>



2016
Launch of new SATIS series. Winner of Red Dot Design Award (SATIS G)



2016
AQUA CERAMIC –the most advanced hygiene technology. Winner of Good Design Gold Award.



2017
Marked the 50th anniversary of the first made-in-Japan shower toilet launched in 1967.



2019
Launch of the new INAX brand identity "Rituals of Water" at Milan Design Week.

PRODUCTS BY INAX

S600 LINE

In Japan, skillfully utilizing limited space and creating a beautiful world within has become a coveted art.

The S600 LINE by INAX presents the ultimate combination of traditional Japanese design with modern sensibilities and innovation.



S600 LINE



ONE-PIECE TOILET
CC105201-6 DF10-AN

- AQUA CERAMIC prevents dirt from sticking
- Rimless design realizes one-sweep cleaning inside the bowl
- Skirted base is easy to clean
- Water-saving dual flushing system, 4.5L / 3.0L
- Powerful vortex flush
- Unique tank lid designed to be used as tray
- Soft close seat and seat cover

W 362 / D 740 / H 655 mm



SHOWER TOILET / SATIS G
CEIX5321-1120510F0

- Foam cushion prevents urine splash
- Air shield deodorizer prevents leakage of smell
- Seamless seat eliminates the side gap of the seat, making it easy to clean
- Plasmacluster® kills bacteria across the entire surface of the bowl
- AQUA CERAMIC prevents dirt from sticking
- Dual nozzle
- Night light
- Automatic open / close

W 375 / D 705 / H 540 mm



SHOWER TOILET / SATIS G BLACK
CEIX5321-1124410F0

W 375 / D 705 / H 540 mm



CERAFINE™ VESSEL
BASIN SQUARE
CLS61001-6DF00-A

- The CERAFINE™ VESSEL BASIN realizes an ultra- thin and elegant design while also being strong
- AQUA CERAMIC prevents dirt from sticking

W700 / D 500 / H 100 mm



CERAFINE™ VESSEL
BASIN SQUARE WITH DECK
CLS630F1-6DF00-A

- The CERAFINE™ VESSEL BASIN realizes an ultra- thin and elegant design while also being strong
- AQUA CERAMIC prevents dirt from sticking

W700 / D 500 / H 100 mm



VESSEL BASIN
CL0652F1-6DF00-A

- AQUA CERAMIC prevents dirt from sticking

W 650 / D 460 / H 100 mm



CERAFINE™ VESSEL BASIN
CLS62001-6DF00-A

- The CERAFINE™ VESSEL BASIN realizes an ultra- thin and elegant design
- AQUA CERAMIC prevents dirt from sticking

W 560 / D 400 / H 100 mm



CERAFINE™ VESSEL
BASIN WITH DECK
CLS640F1-6DF00-A

- The CERAFINE™ VESSEL BASIN realizes an ultra- thin and elegant design while also being strong
- AQUA CERAMIC prevents dirt from sticking

W700 / D 500 / H 100 mm



FAUCET
FFIXLS01-101500BG0

- Designed with smooth handling for effortless precision and ease of use
- Holed lever for easy handling
- Eco Care with aerator for water saving

W 52 / D 166 / H 155 mm



BASIN MIXER (EXTENDED TYPE)
FFIXLS02-601500BG0

- Designed with smooth handling for effortless precision and ease of use
- Holed lever for easy handling
- Eco Care with aerator for water saving

W 52 / D 200 / H 273 mm





INTELLIGENT CONTROL
SHOWER SYSTEM
FFIXBS17-6B2000BG0

- Push button with a dial allows ease of control and precision for water and energy saving
 - Shower faucet designed with rimmed-edge tray for shower essentials. Includes a back slit to prevent water pooling.
 - Large showerhead with luxurious cascading spray patterns for relaxing shower experience
- W 450 / D 575 / H 1176 mm



FREESTANDING BATH &
SHOWER MIXER
FFIXCS16-6B4500BG0

- Simple but sophisticated design for luxurious presence
 - Top of faucet can be used as a tray for bath essentials
 - Water saving hand shower
- W 273 / D 395 / H 860 mm



BATHTUB
BTIX5700-032BW03F0

- Simple design with a sophisticated seamless curve brings a luxurious presence
 - Organic and comfortable curve inside and outside the bathtub
 - Anti-slip bottom surface
- W 1700 / D 900 / H 550 mm



S400 LINE

Inspired by Japanese water rituals and the interplay of light and shadows, the S400 LINE bathroom collection with carefully designed use of light, architecture and décor, creates a serene atmosphere for one to recharge and spend a moment of reflection.

S400 LINE



ONE-PIECE TOILET
CC103201-6DF10-AN

- AQUA CERAMIC to prevent stains and dirt buildup
- Sleek and simple design with skirted base for ease of cleaning
- Double vortex flush with water-saving dual flushing system of 5.0L / 3.5L
- Soft close seat and seat cover

W 372 / D 809 / H 605 mm



CLOSE COUPLED TOILET
CC083201-6DF10-AN

- AQUA CERAMIC protection against stains
- Rimless design for ease of cleaning
- Powerful vortex flush with water-saving dual flushing system of 4.5L / 3.0L

W 372 / D 744 / H 748 mm



MANUAL BIDET
CS0S3201-6DF00-N

- Brand new slim design
- Antimicrobial material
- Dual nozzles (front/rear) for hygienic cleansing
- Easy installation
- Rear inlet for water supply to eliminate complex piping setup

W 372 / D 530 / H 63 mm



VESSEL BASIN
CL0632F1-6DF10-A

- AQUA CERAMIC to prevent stains and dirt buildup

W 575 / D 429 / H 155 mm



EXPOSED SHOWER SYSTEM
FB0635S1-F

- Top of faucet can be used as a tray for shower essentials
- A design with simple and robust swivel shower head
- Large overhead shower for full body coverage
- Hand shower with pressure booster can be used in low water pressure conditions
- Soft hose for smooth water flow and easy cleaning

W 326 / D 542 / H 1245 mm



BASIN MIXER
FL0632S1-F

- Designed with smooth handling for effortless precision and ease of use
- Eco Care with aerator for water savings

W 44 / D 145 / H 154 mm

Price excludes the exhaust pipe



SIMPLE. MODERN. FUNCTIONAL.
THE PERFECT BATHROOM
FOR URBAN LIFE.



Through decades of experience developing bathrooms in the small island country of Japan, INAX has mastered the technologies to achieve maximum comfort while managing compact spaces.

Simple yet beautiful. Functional and comfortable.

With a modern design, INAX S200 LINE offers the Maxi-Compact bathroom that is just right for people leading a busy, urban lifestyle. Featuring all the essential functions you need in your bathroom, its thoughtful design will make your everyday life easier and more enjoyable.

Add a touch of luxury to your daily life. Treat yourself to the comfort of a perfectly coordinated bathroom with S200 LINE.

S200 LINE



ONE-PIECE TOILET
CC090201-6DFI0-AN
W 372 / D 720 / H 680 mm

- AQUA CERAMIC prevents dirt from sticking
- Rimless realizes one-sweep cleaning inside the bowl
- Skirt design is easy to clean
- Water-saving dual flushing system, 4.5L / 3.0L
- Powerful vortex flush
- Soft close seat and seat cover
- Wider seat area for additional comfort



CLOSE COUPLED TOILET
CC060201-6DFI0-AN
W 372 / D 720 / H 740 mm

- AQUA CERAMIC prevents dirt from sticking
- Rimless realizes one-sweep cleaning inside the bowl
- Skirt design is easy to clean
- Water-saving dual flushing system, 4.5L / 3.0L
- Powerful vortex flush
- Soft close seat and seat cover
- Wider seat area for additional comfort



SEMI-COUNTERTOP BASIN
CL0345F1-6DFF0-A
W 530 / D 435 / H 170 mm

- AQUA CERAMIC prevents dirt from sticking
- Deep basin for multi-purpose use



WALL-HUNG BASIN
CL0312F1-6DFF0-A
W 530 / D 435 / H 503 mm

- AQUA CERAMIC prevents dirt from sticking
- Deep basin for multi-purpose use



BASIN MIXER
FL0612S-F
W 46 / D 153 / H 151 mm

- Handling with smooth and effortless precision and ease of use
- Hidden outlet makes appearance sophisticated
- Eco Care with aerator, water-saving
- Adjustable-angle aerator



EXPOSED SHOWER SYSTEM
F0B615S1-F
W 318 / D 150 / H 1336 mm

- Wide overhead shower for wider coverage and comfort
- Hand shower with Aqua POWER pressure booster
- Top of the body can be used as a tray
- Movable shower holder
- Soft hose flows well and is easy to clean
- Intuitive shower diverter



TILES



LATTICE
T96LT011-L1F00-VN
WHITE
INAX-300 / LTC-11
SIZE/PC 300×300mm
THICKNESS 7mm



LATTICE
T96LT013-01F00-VN
WHITE (NO LUSTER)
INAX-300 / LTC-13
SIZE/PC 300×300mm
THICKNESS 7mm



LATTICE
T96LT012-L1F00-VN
GRAY
INAX-300 / LTC-12
SIZE/PC 300×300mm
THICKNESS 7mm



LATTICE
T96LT014-L1F00-VN
IVORY
INAX-300 / LTC-14
SIZE/PC 300×300mm
THICKNESS 7mm

ENHANCED HYGIENE WITH TOUCHLESS DESIGN



TOUCHLESS TOILET COLLECTION



S200 LINE
ONE PIECE TOUCHLESS
CC090203-6DFI0-AN

- AQUA CERAMIC prevents dirt from sticking
- Rimless realizes one-sweep cleaning inside the bowl
- Skirt design is easy to clean
- Water-saving dual flushing system, 4.5L / 3.0L
- Powerful vortex flush
- Soft close seat and seat cover
- Wider seat area for additional comfort

W 372 / D 720 / H 680 mm



S200 LINE
CLOSE COUPLED
TOUCHLESS
CC060203-6DFI0-AN

- AQUA CERAMIC prevents dirt from sticking
- Rimless realizes one-sweep cleaning inside the bowl
- Skirt design is easy to clean
- Water-saving dual flushing system, 4.5L / 3.0L
- Powerful vortex flush
- Soft close seat and seat cover
- Wider seat area for additional comfort

W 372 / D 720 / H 740 mm



S400 LINE
CLOSE COUPLED TOILET
CC083203-6DFI0-AN

- AQUA CERAMIC prevents dirt from sticking
- Rimless design realizes one-sweep cleaning inside the bowl
- Simple overall design, easy to clean
- Water-saving dual flushing system, 4.5L / 3.0L
- Powerful vortex flush
- Soft close seat and seat cover

W 372 / D 744 / H 748 mm



THE NEXT LEVEL OF HYGIENE

- TOUCHLESS INNOVATION

The INAX Touchless Toilets feature hands-free flushing to provide enhanced hygiene. Combined with award-winning flushing and anti-stain technologies, your bathroom will always be clean, spotless and safe.



HANDS-FREE FLUSHING

When there is no direct contact with the flush button, there's no worry of cross contamination and any chances of germ pick-up.

MANUAL PUSH BUTTON

Our touchless toilets feature a manual flush button that allows for continuity of use, even if you're not in time for a battery change.

EASY INSTALLATION AND LASTING USAGE

No cables or wires are required in the installation. Simply place the discreet flush sensor anywhere within a range of 5m from the toilet. All it takes is just four AA batteries for ease of maintenance and long lasting usage.

WATER-RESISTANT

The durable flush sensor is water-resistant so you don't have to worry about accidentally dropping it into your bath.

EFFORTLESS HYGIENE



AQUACERAMIC PREVENTS DIRT AND WATER STAINS

Super hydrophilic technology prevents dirt and dark ring stains from sticking to ceramic surface.



VORTEX FLUSH EFFORTLESSLY CLEANS

The powerful water-saving dual flush system (4.5L / 3.0L) ensures that nothing is left behind.



RIMLESS BOWL IS EASY TO CLEAN

Takes only a quick sweep to clean the toilet.



BRIDGING COMFORT AND CONVENIENCE



**WIDER SEAT
FOR BETTER FIT AND
GREATER COMFORT**
The seat is designed for a wider fit for greater user
comfort.



**SKIRT DESIGN
IS EASY TO CLEAN**
The curved skirt design makes
cleaning effortless.



**SOFT CLOSING SEAT
FOR GENTLE AND QUIET CLOSING**
Gentle and quiet closing action for
user convenience.



SATIS G





AUTO FLUSH

The toilet automatically flushes after use for touchless and hygienic experience



AUTO OPEN AND CLOSE BIDET

Hands free convenience with an automated toilet seat that opens when user approaches and closes when user leaves



HEATED SEAT

Heated seat for added comfort and warmth



WARM AIR DRYING

Warm air emission for gentle and comfortable drying experience



REMOTE CONTROL

Intuitive remote control of toilet functions for added convenience



ANTIBACTERIAL FUNCTION

Ag+ ions prevent bacteria growth, meeting the ISO 22196 SIAA for antibacterial efficacy (seat only)

CONVENIENCE & ENERGY-SAVING



AUTOMATIC NIGHT LIGHT

A soft night light that is gentle on vision, yet bright enough for use in low light conditions



SOFT CLOSING

Soft closing to prevent unwanted loud noises or cracks upon closure



WATER SAVING

Technology to optimize water consumption during a single flush.



POWER SAVING

Advanced technology for energy efficiency and cost savings

SHOWER TOILET

HYGIENE & COMFORT



PLASMACLUSTER

The patented Plasmacluster® Technology by Sharp generates negative ions and releases them into the bowl to effectively disinfect the air and reduce airborne bacteria and mold. The automatic release of ions completely sanitizes all parts of the toilet bowl, lid and seat to ensure peace of mind and comfort.



AIR SHIELD DEODORIZER

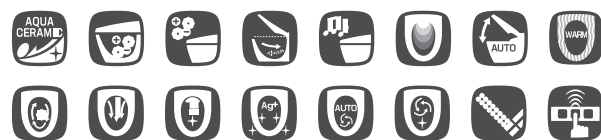
This innovative technology generates a curtain of air within the toilet bowl to create a powerful deodorizing effect when in use. Circulating air shields odor from escaping the toilet, keeping the bathroom fresh and pleasant.



SATIS G WHITE
CEIX5321-1120510F0

SATIS G BLACK
CEIX5321-1124410F0

- AQUA CERAMIC to prevent stains and dirt buildup
 - Anti-splash foam cushion
 - Built-in electronic pump to generate a powerful flush, even when water pressure is low
 - Deodorization of airflow to reduce and prevent odor
 - Plasmacluster® to disinfect the entire surface of the toilet bowl
 - Night light
 - Automatic open / close
- W 375 / D 705 / H 540 mm



Made in Japan



ANTIBACTERIAL FUNCTION

Ag+ ions prevent bacteria growth, meeting ISO 22196 SIAA for antibacterial efficacy (seat only)



SOFT CLOSING

Soft closing to prevent unwanted loud noises or cracks upon closure



AUTO SPRAYING AND CLEANSING

Auto spraying and cleansing function



FEMININE CLEANSING

Dedicated spray for gentle cleansing of feminine area



DUAL NOZZLE

Dedicated nozzles for posterior cleansing and feminine wash



S400 FUJI MANUAL BIDET
CS0S3201-6DF00-N



- Brand new, compact and slim design
- Antimicrobial material
- Dual nozzles (front / rear)
- Easy installation
- Rear inlet for water supply to eliminate complex piping setup

COMPATIBLE FOR BELOW TOILETS:

Product number	Description
CC105201-6DF10-AN	S600 One Piece
CC103201-6DF10-AN	S400 One Piece
CC083201-6DF10-AN	S400 Close Coupled
CC090201-6DFI0-AN	S200 One Piece
CC060201-6DFI0-AN	S200 Close Coupled
CC095901-6DF10-AN	One Piece Toilet



INAX TOILET TECHNOLOGY



AQUA CERAMIC
The revolutionary technology features super-hydrophilicity on the ceramic surface, preventing stains and lifting dirt from the surface with just the power of water



DETACHABLE BIDET
The bidet can be easily lifted and detached for cleaning



RIMLESS
A rimless design with no hidden corners for dirt or bacteria to accumulate



CLEAN RIM
Full discharge of water from the top for effective cleansing of dirt and stains in the bowl



TRIPLE VORTEX FLUSHING
Triple vortex flush harnesses the force of three powerful jet streams to efficiently flush the entire bowl surface



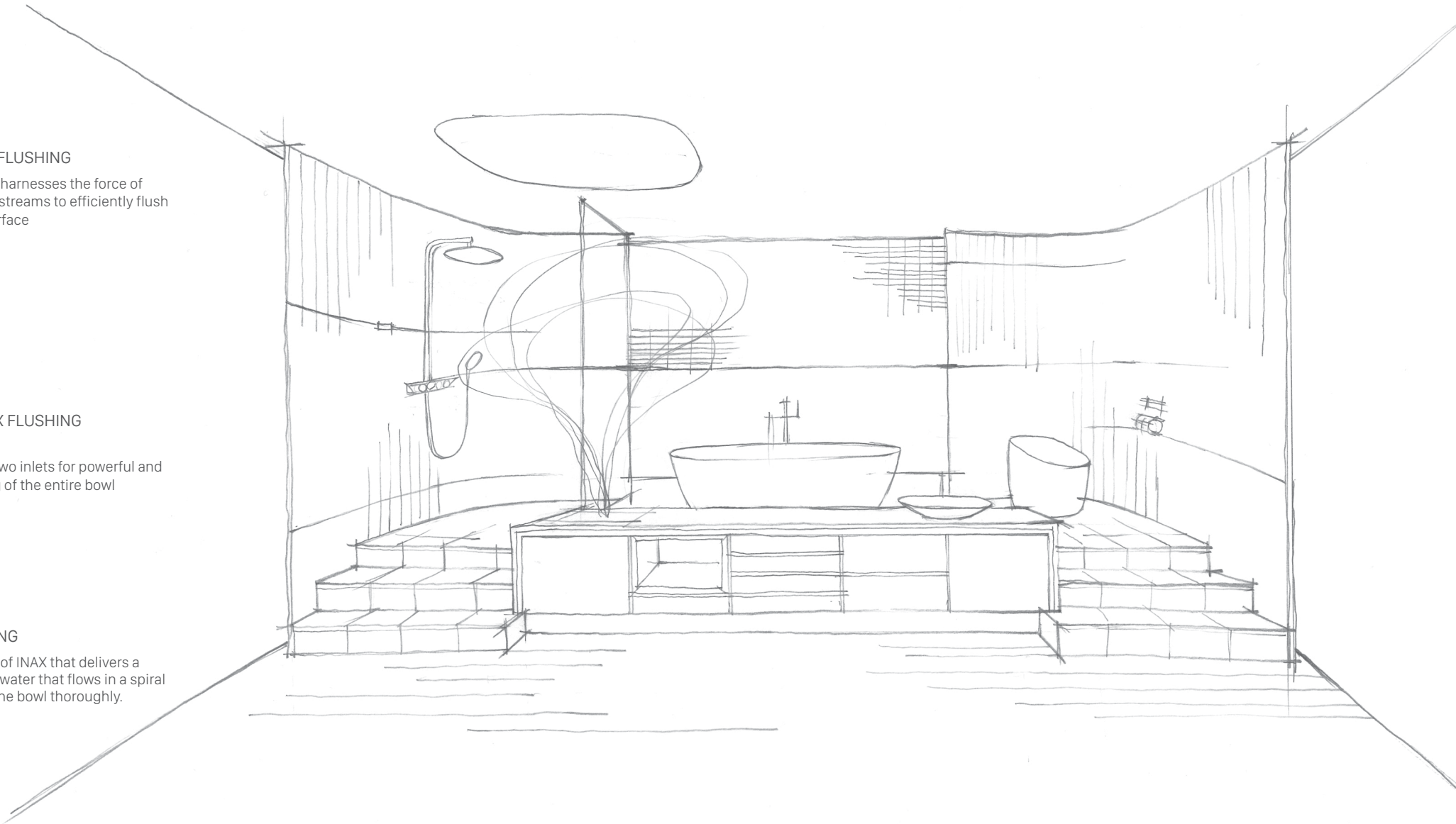
DOUBLE VORTEX FLUSHING ECO-X
Direct flush from two inlets for powerful and efficient cleansing of the entire bowl



VORTEX FLUSHING
Unique technique of INAX that delivers a forceful stream of water that flows in a spiral motion, cleaning the bowl thoroughly.



ECO 4.8
Water savings with only 4.8L for one full flush



INAX TOILET - JAPANESE TECHNOLOGY

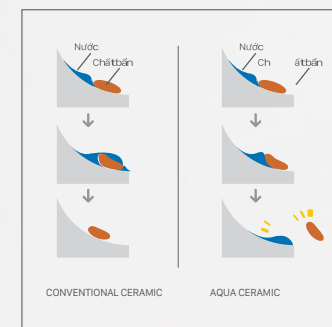


100 YEARS
OF CLEAN

AQUA CERAMIC

The revolutionary AQUA CERAMIC technology features super-hydrophilicity on the ceramic surface, preventing lime scale and lifts stains from the surface with just the power of water for 100 years of clean and shine.

GOOD DESIGN AWARD 2016
GOLD AWARD



EASY TO WASH OFF STAINS

The super-hydrophilicity allows water to easily penetrate beneath waste to lift off the surface.



ANTI-STAIN SURFACE

AQUA CERAMIC delivers the highest level of anti-stain performance and eases the burden of cleaning

AQUA CERAMIC TECHNOLOGY





RIMLESS TOILET

A rimless design with no hidden corners for dirt or bacteria to accumulate.



NEW DESIGN

Simple yet sleek design for a modern bathroom.

EASY TO CLEAN

No hard-to-reach corners and easy to clean with a gentle wipe

SUPERIOR FLUSHING

Direct and even water distribution for powerful flushing across the entire bowl

CERAFINE™
VESSEL BASIN

Delicately designed with super-thin edges, the beautiful CERAFINE™ VESSEL BASIN embraces a refined look and feel, embodying a uniquely Japanese spirit and sensibilities.



Inspired by the traditional Japanese sake cup, the elegant shape of the CERAFINE™ VESSEL BASIN is accentuated by the shine of the glaze. Its exquisite design makes the CERAFINE™ VESSEL BASIN an attractive object in its own right.

Supporting the ultra-thin design is INAX's new clay, which maintains its strength and does not deform during firing. The CERAFINE™ VESSEL BASIN is also easy to clean and maintain, as it is made with AQUA CERAMIC technology that prevents dirt from attaching to the surface.





INAX SHOWER JAPANESE TECHNOLOGY



SHINING SURFACE

Three standard thickness Cr/Ni coatings plated on pure Japanese-standard copper ensure a shiny basin surface



ECO CARE

The series combines thoughtful designs and features to increase water and energy savings



ACCESSORIES HIGHLY DURABLE

Thermostatic shower core with two ultra-fine ceramic plates works smoothly and ensures high durability



AUTO SHOWER

Enjoy convenience, speed and accuracy from our innovative auto shower technology



HIGHLY DURABLE SHOWER CORE

Solid copper valve core, with minimized Japanese-standard heavy metals for users' health



MASSAGE SHOWER

Shower spray pattern with massage effect for a relaxing shower



ECOFUL SHOWER

ECOFUL SHOWER showerhead infuses water with air, creating a relaxing water massage experience in the shower. In addition, it provides 35% water savings as compared to conventional hand showers



THERMOSTAT

Quick, automatic, and precise stabilizing of shower temperature with a simple operation



ECO CLICK

The handle has 2 levels of water flow adjustment (50% & 100%) for water savings



ECO HANDLE

The middle position of the handle is set to cold water which fits the users' typical habits, and saves warm water and power



AUTOMATED SHOWER

Uses water pressure to generate an electric current to the shower without the need for a power supply, making it environmentally-friendly



PROXIMITY SENSOR

Proximity sensor uses a camera's autofocus technology with 64 detection points for fast and accurate sensing



MASSAGE O₂

The air pushed into the water jet in the hand shower helps create soft water drops which massage and rejuvenate your skin



BUBBLE MASSAGE

A massage mode using countless air bubbles inside the water jet creates tiny water drops to gently care for sensitive soft skin



360°

Shower spray heads that can be rotated 360°, offering exceptional convenience while delivering strong spray pressure that is gentle enough on the skin



HIGH PRESSURE HAND SHOWER

Aqua POWER™

POWER WITH EXCITEMENT



POWERFUL

Creates water pressure **up to 5 times more powerful** than conventional hand showers

(Tested under controlled conditions by LIXIL Vietnam CO.)



RELAXING

Water temperature is maintained stable for excellent shower experience



CLEANSING

Easy to clean by just opening the head cover via included tools

 **GOOD DESIGN AWARD 2019**

KITCHEN SOLUTION

JAPANESE TECHNOLOGY



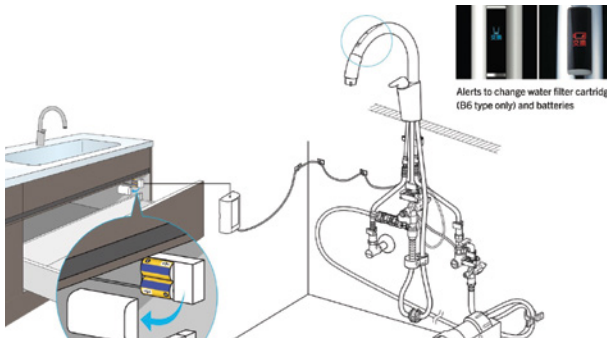
Touchless feature for hassle-free use.



Significant reduction of splashes while washing dishes.



Effortless sink cleaning with the use of the pull-down spray head to easily clean the sink.



Easy installation with only 2 D batteries (3V), no electrical work required.



Navish's higher-arc gooseneck curve allows you more sink space than conventional faucets, washing large or deep pots is a simple task. •

KITCHEN FAUCET



NAVISH SENSOR KITCHEN FAUCET
FOS454SX- F

- Battery operated
- Battery life is up to 1 year*
- Retractable faucet head
- Dual spray with continuous flow
- Automatic water stops after 10 minutes



GOOD Design Awards winner, 2019

SMART CABINETS



QUICK POCKET 900mm
KKLX31A---DSUPB090
W 900 / 76 – 155 / 495mm (opened)

QUICK POCKET 750mm
KKLX31A---DSUPB075
W 750 / 76 – 155 / 495mm (opened)

- Sleek and space saving storage solution
- Easy to clean
- Fully retractable
- Adjustable dividers
- Upper shelf load 4kg
- Lower shelf load 3kg



QUICK PALLET 900mm
KKLX31A-DSFBX2N090
W 900 / 180 / 375mm (opened)

QUICK PALLET 750mm
KKLX31A-DSFBX2N075
W 750 / 180 / 375mm (opened)

- Quick storage
- Drainage shelves
- Fully retractable
- Upper shelf load 10kg
- Lower shelf load 10kg

*Approximately 1 year with average 20C, daily use 100 times/day. Batteries need to be replaced once a year. Battery life varies depending on the usage, use frequency and the installation environment of the faucet.

ACCESSORIES



PAPER HOLDER
FFIXV087-908500BF0
W 200 / D 83 / H 30 MM



ROBE HOOK
FFIXV081-908500BF0
W 60 / D 30 / H 63.6 MM



TOWEL RING
FFIXV090-908500BF0
W 180 / D 85 / H 189 MM



TOWEL BAR
FFIXV093-908500BF0
W 630 / D 90 / H 30 MM



DOUBLE TOWEL BAR
FFIXV094-908500BF0
W 630 / D 140 / H 30 MM



TOWEL SHELF
FFIXV095-908500BF0
W 630 / D 240 / H 133 MM



SOAP DISH
FFIXV082-908500BF0
W 112 / D 118 / H 43 MM



CUP HOLDER
FFIXV084-908500BF0
W 68.5 / D 96.6 / H 97.2 MM



T OILET BRUSH
FFIXV086-908500BF0
W 96 / D 126.3 / H 375 MM

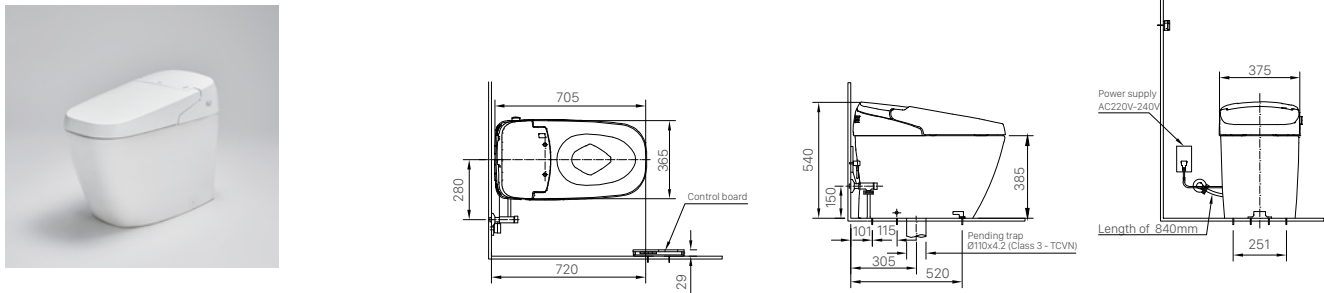


WALL SHELF W 300
FFIXV091-908500BF0
W 370 / D 101.2 / H 37 MM

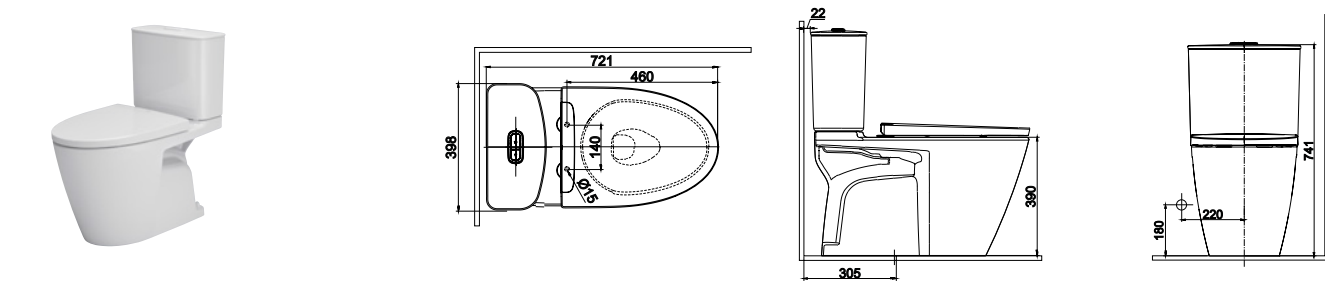


WALL SHELF W 600
FFIXV092-908500BF0
W 650 / D 101.2 / H 37 MM

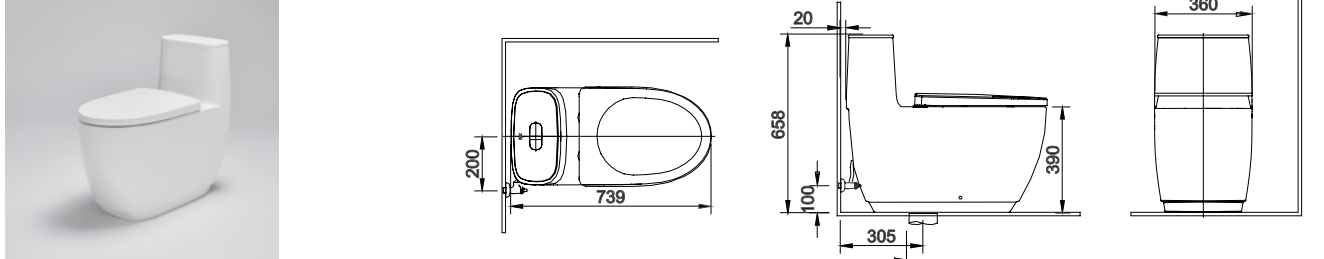
CEIX5321-1120510F0 / CEIX5321-1124410F0



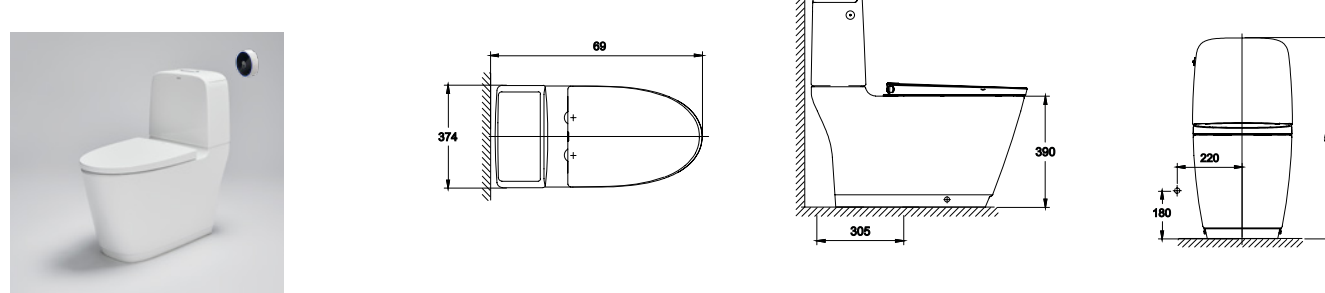
CC060201-6DFI0-AN



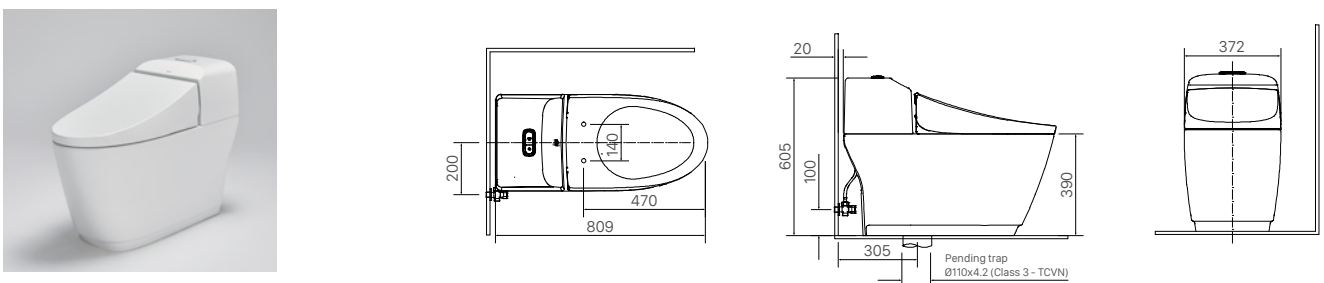
CC105201-6DF10-AN



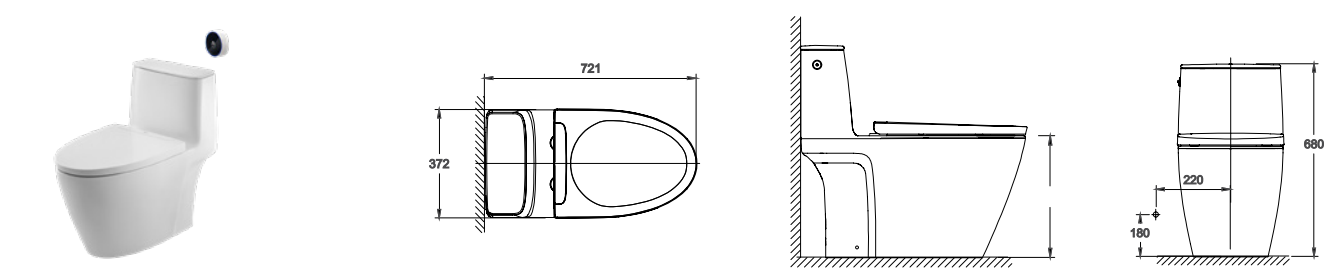
CC083203-6DFI0-AN



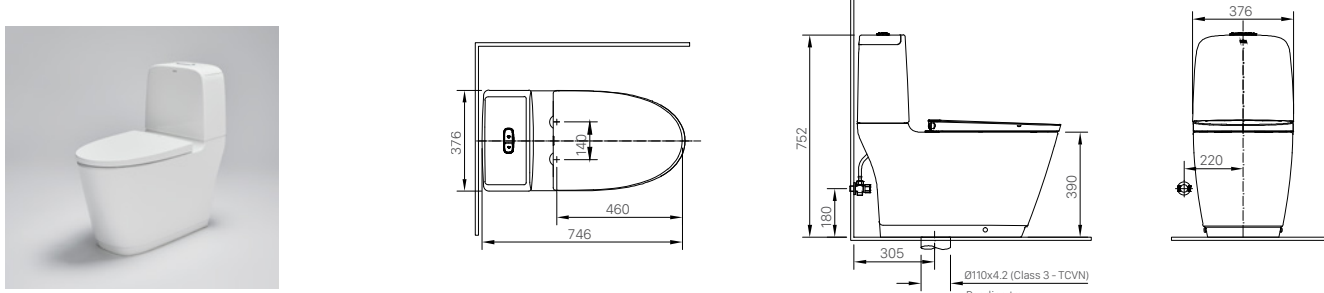
CC103201-6DF10-AN



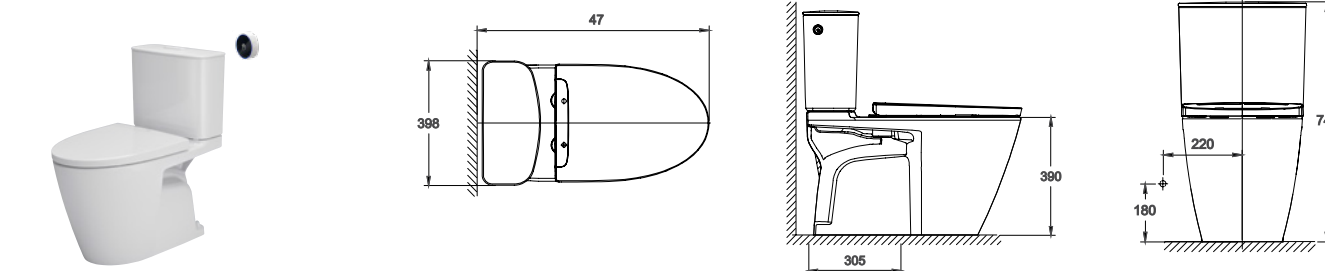
CC090203-6DFI0-AN



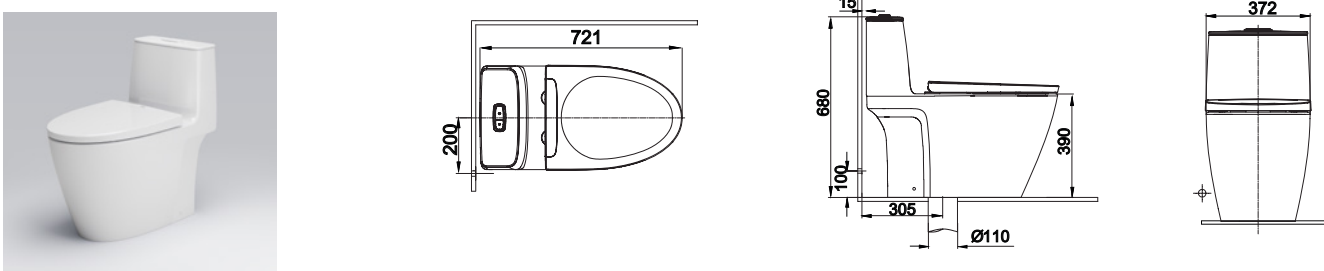
CC083201-6DF10-AN



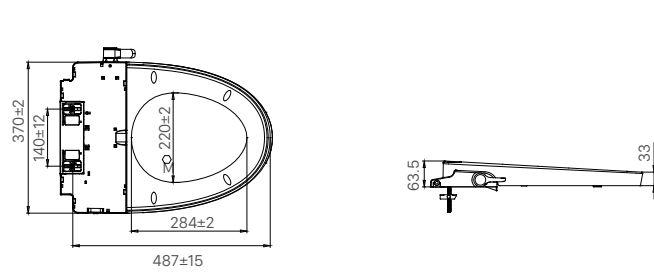
CC060203-6DFI0-AN



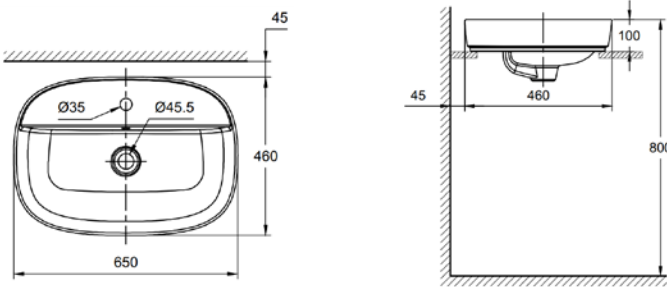
CC090201-6DFI0-AN



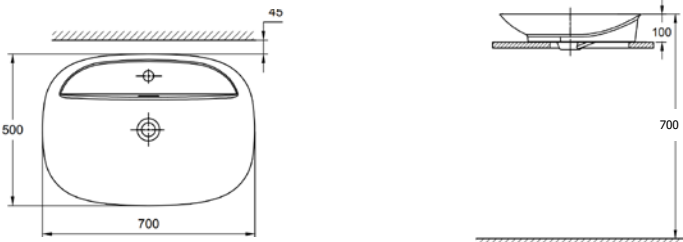
CS0S3201-6DF00-N



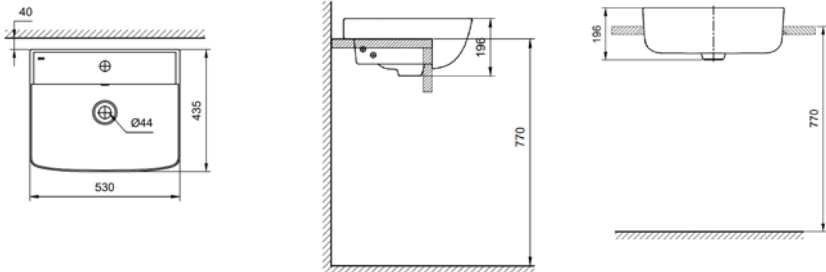
CL0632F1-6DF10-A



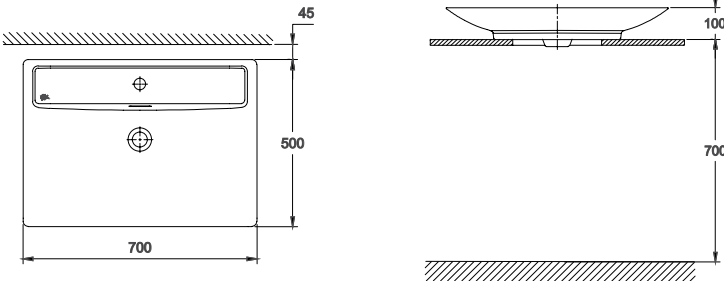
CLS640F1-6DF00-A



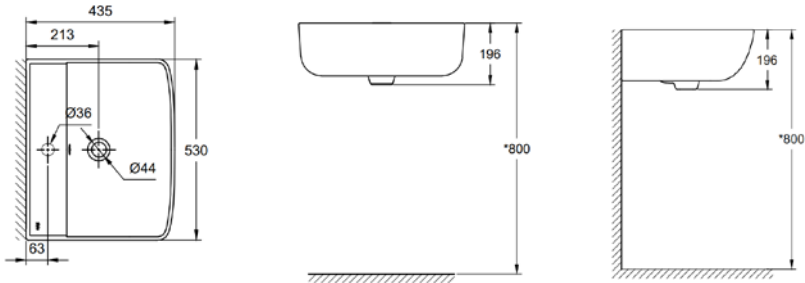
CL0345F1-6DFF0-A



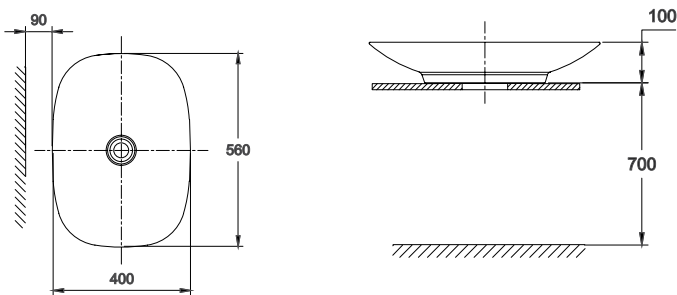
CLS630F1-6DF00-A



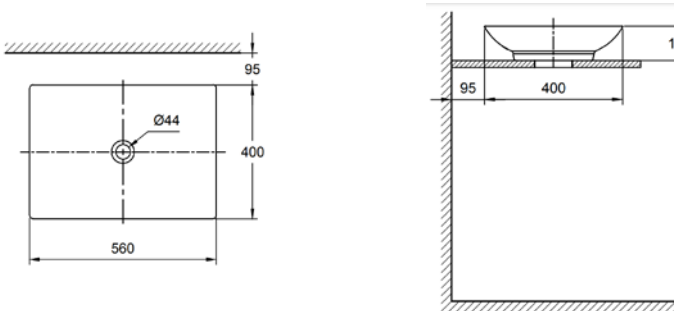
CLS630F1-6DF00-A



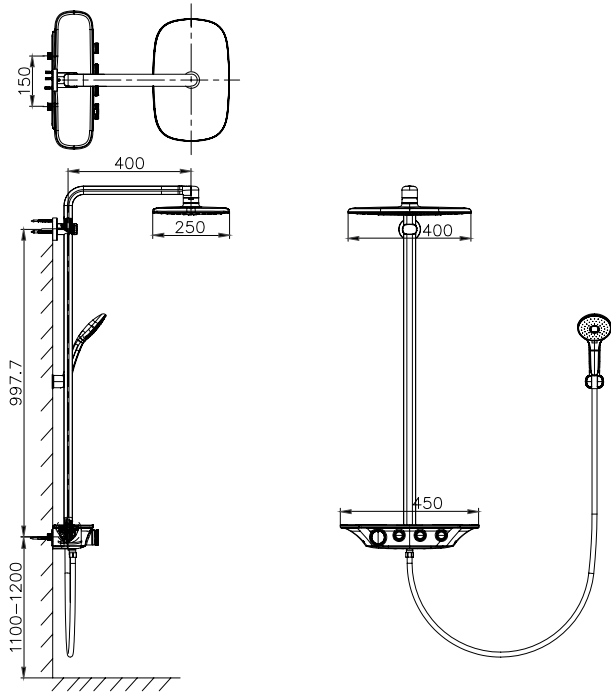
CLS62001-6DF00-A



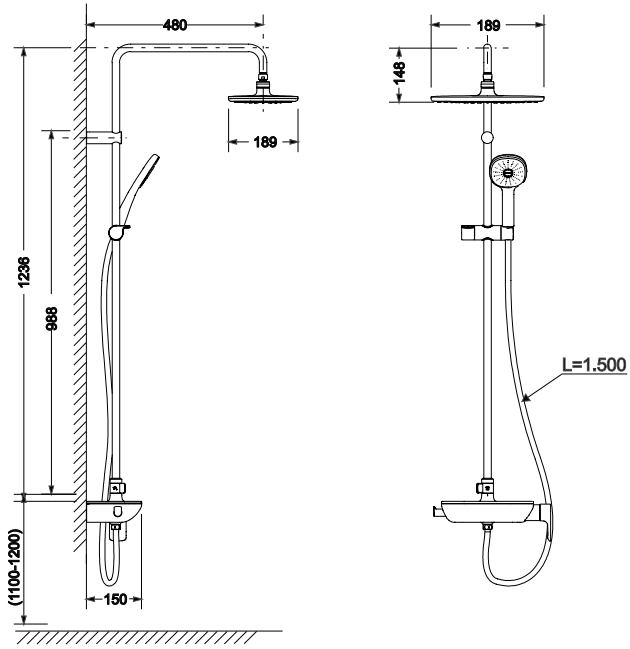
CLS61001-6DF00-A



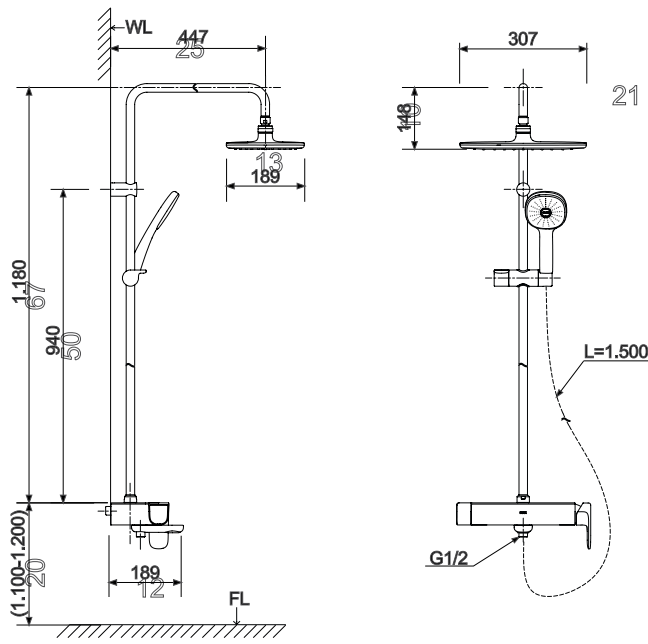
FFIXBS17-6B2000BG0



F0B615S1-F

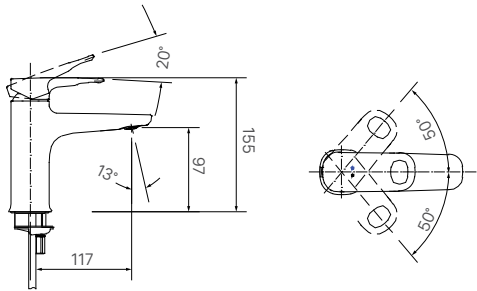


FB0635S1-F

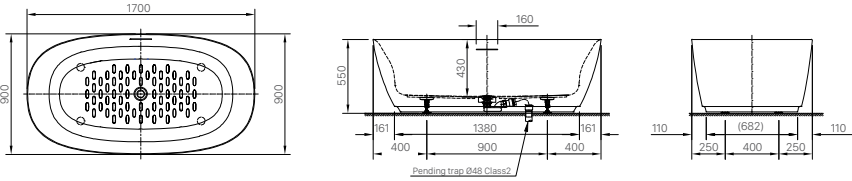


TECHNICAL DRAWINGS

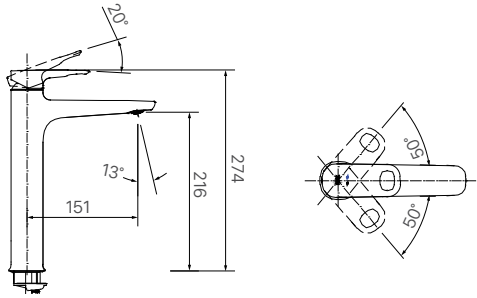
FFIXLS01-101500BG0



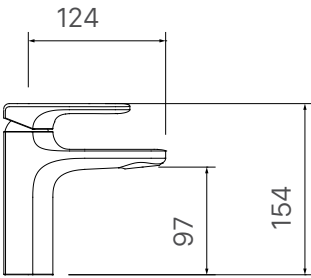
BTIX5700-032BW03F0



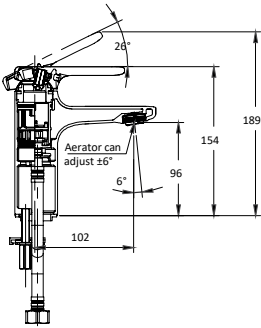
FFIXLS02-601500BG0



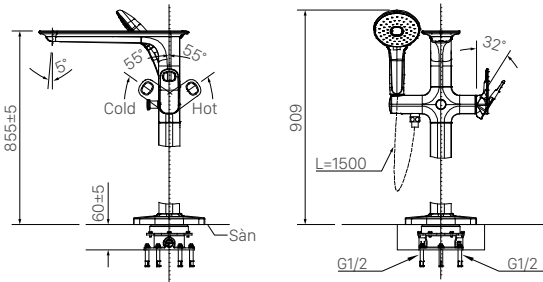
FL0632S1-F



FL0612S-F



FFIXCS16-6B4500BG0



CONTACT US

PT LIXIL TRADING INDONESIA

Palma Tower, 11 Floor.
Jl. R.A Kartini II, Kav. 6 RT 06/RW 14
Kebayoran Lama, Jakarta Selatan 12310
Phone : +62 21 75930501

Showroom:

Palma Tower, Ground Floor.
Jl. R.A Kartini II, Kav. 6 RT 06/RW 14
Kebayoran Lama, Jakarta Selatan 12310
Phone : +62 21 75930501



LIXIL CUSTOMER CARE
0-800-1-267823

E-mail : Customer Care-Indonesia@lixil.com

we can we care



INAX.CO.ID

Version 05.2020



www.inax.co.id